



MORNINGTON BENTON JUNIOR COLLEGE



A new Primary School for 451-475 students, Benton Junior College was completed for occupation in January 2003 at a construction cost of \$3,796,000.

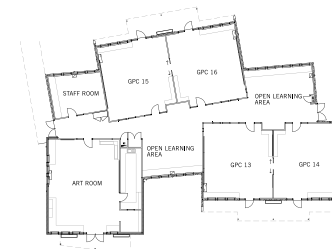
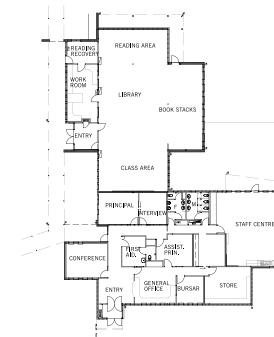
The buildings are set around a central stepped courtyard area, with Administration / Resource and Physical Education facilities located close to the main student / staff / visitor access point, and forming two sides of the enclosure.

Three separate buildings provide for Junior, Middle and Senior years, and are each oriented to maximize sun penetration and natural light. The Art / Craft facilities form part of the Senior Classroom wing, and are located so as to enable easy access by all the students.

The planning of the Classrooms provides a high degree of flexibility of use of the spaces. Open Learning Areas are accessible directly from each pair of Classrooms, each Classroom has direct access to the outside, and Staff Work space is provided adjacent to each Classroom.

Particular features include the creative use of colour both internally and externally,

The use of geometric shapes in glazing of doors and windows as visual identification, and the provision of "ventilation chimneys" to provide a state of the art method of ensuring Classrooms do not overheat in summer or winter.



Contact:
Andy Robertson
03 9591 0269